



INTEGRATION
TOOLS



Jessica has 137 packages to send out before 3 p.m. today.
Will she make it? How many typos will cause a package to be returned?

There is a **better** way.

FedEx has created a **faster** way to handle shipping.

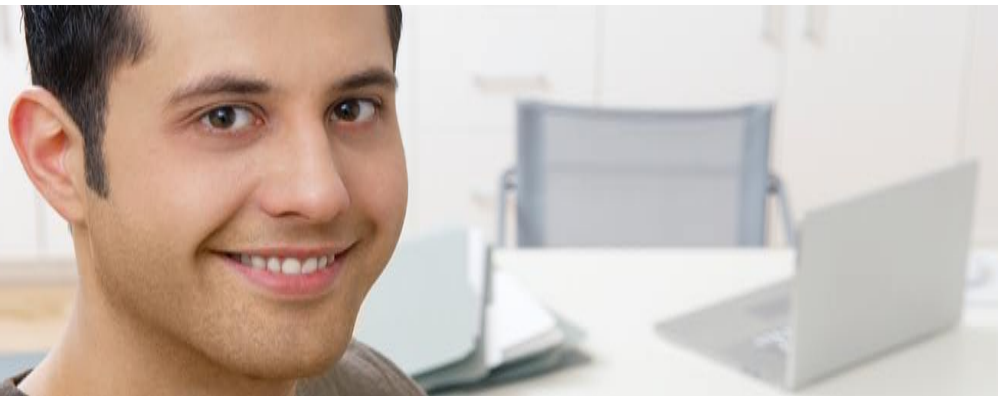
Integration tools help you get more done.

Time is a valuable commodity in today's fast-paced business environment. Time-saving practices are essential to success and future development. Data integration is an easy way to save time, increase productivity, avoid errors and simplify daily tasks. In fact, you can cut the time it takes to ship a package in half.

FedEx recognizes the importance of integration and has designed exclusive integration tools that enable simple, fast and reliable data sharing. The integration system maintains the latest customer information and disseminates tracking and billing details – and that's just a few of its capabilities.

FedEx integration consultants are ready to help.

Best of all, the integration system is simple to implement, fast, and you have easy access to support directly from FedEx. We have expert support available over the phone, staffed with a team that can help you every step of the way. Plus, we're here anytime a question comes up, ready to help keep you moving. We've also got a team of customer integration consultants ready to come to you and customize an integration solution to satisfy the requirements of your unique data system. It doesn't stop there. Your customer integration consultant provides support for the integrated system. All integration support is absolutely free – you pay for nothing more than the actual shipping. **Take advantage of the free FedEx integration tools, and stop working harder and start working smarter.**



Tony got 46 packages out the door in less than an hour. Now he can get a jump on the reports that are due tomorrow.

FedEx® Integration Assistant. **Easy, fast and free.**

Our FedEx Integration Assistant is a component of FedEx Ship Manager® software that communicates with ODBC compliant business systems. It's very flexible and works with databases like Microsoft® Access™, Microsoft Visual FoxPro®, Microsoft SQL Server™, Oracle® and QuickBooks®. It will automatically access key information for shipping, billing and tracking in real time. It can even access information from simple text files.

FedEx Integration Assistant requires no changes to your existing software, and it's easy to use, so you'll be working smarter right away. We've designed it with a wizard interface that takes you step-by-step through the entire installation process. Plus, we're always available with expert help.

You decide when FedEx Integration Assistant exchanges information with your business system and when and how labels are printed. All your preferences are saved in the shipping profile that you create. The level of automation is also your call. At the highest level, each shipping label is completed and printed with one keystroke. Detailed information is automatically saved as a reminder, and it stays in that specific customer profile so there's no chance of missing it.

You'll immediately benefit from:

- Reduced data entry, which means reduced errors.
- Less duplication of work for better efficiency.
- Easy customer information management, which means you're always up to date. And it's free!

To begin integrating your shipping information with the FedEx Integration Assistant, find the INTEGRATION tab at the top of the FedEx Ship Manager home screen, then click and select FedEx Integration Assistant to launch the step-by-step wizard.

There is an **easier** way.

We can customize your integration.

Customized integration for your business.

Does your business use a specialized business system? Maybe you use a tailored version of a Microsoft data program specific to your industry or you have a completely unique system of your own design – we can get you integrated. You'll be assigned your own customer integration consultant who will come to your business, learn your business system and create an integration solution just for you. And it's all at no charge.





Dina just sent the tracking numbers for 38 packages to four company departments with one keystroke.

How integration can help you work smarter:

	Easier	Faster	More Accessible	More Flexible
Maintain customer information	Every time you make a shipment, customer data is checked and updated	Shipping labels are automatically completed upon opening a profile	No matter where information is housed, FedEx® Integrator will find it	You decide how much information is automatically included
Handle Bills of Lading	Information comes from FedEx Ship Manager® – no need for Bill of Lading	Information is no longer “handed” from one person to another	FedEx® Integration Assistant is custom-fitted to your business system	You determine who gets the shipping information
Distribute tracking numbers and costs to appropriate departments	You choose the level of automation that best suits your business	All shipping and billing information is automatically dispersed to the appropriate departments	Information can be posted to a dedicated internal page for reference	Particular information can be sent to predetermined people or departments
Double-check each shipping label	Print labels in batches, all at once or individually	No need to double-check shipping labels	It's easy to review what has been completed	You can group shipping labels by criteria you determine

Your FedEx account executive is ready to get your integration started or answer any questions.